



Certificate of Analysis

QA SAMPLE - INFORMATIONAL ONLY

1 of 3

ICAL ID: 20191114-097
Sample: 1911ICA6396.19470
190917-2 DouleuRX Cream
Strain: 190917-2 DouleuRX Cream
Category: Ingestible

NexGen Sciences
Lic. # n/a
8380 Miramar Mall
San Diego, CA 92121

Lic. #

Batch#:
Primary Size:
Total/ Batch Size:
Collected: 11/15/2019; Received: 11/15/2019
Completed: 11/15/2019

Moisture NT Water Activity NT	Δ9-THC ND	CBD 11.52 mg/g	Total Cannabinoids 11.52 mg/g	Total Terpenes NT
----------------------------------------	--------------	-------------------	----------------------------------	----------------------

Summary

Batch
Cannabinoids

SOP Used

SOP:POT-T006-Topical

Date Tested

11/14/2019

Complete
Complete



Scan to see results

Cannabinoid Profile

Analyte	LOQ	LOD	%	mg/g	Analyte	LOQ	LOD	%	mg/g
THCa	0.03	0.02	ND	ND	CBDV	0.03	0.02	<1	<1
Δ9-THC	0.03	0.02	ND	ND	CBN	0.03	0.02	ND	ND
Δ8-THC	0.03	0.02	ND	ND	CBGa	0.03	0.02	ND	ND
THCV	0.03	0.02	ND	ND	CBG	0.03	0.02	ND	ND
CBDa	0.03	0.02	ND	ND	CBC	0.03	0.02	ND	ND
CBD	0.03	0.02	1.152	11.52	Total			1.152	11.52

Total THC=THCa * 0.877 + Δ9-THC; Total CBD = CBDa * 0.877 + CBD; NR= Not Reported, ND= Not Detected, *Reported by Dry Mass*; *analytical instrumentation used Cannabinoids:UHPLC-DAD, Moisture:Mass by Drying, Water Activity:Water Activity Meter, Foreign Material:Microscope*

Terpene Profile

Analyte	LOQ	LOD	%	mg/g	Analyte	LOQ	LOD	%	mg/g
---------	-----	-----	---	------	---------	-----	-----	---	------

NR= Not Reported thus no analysis was performed, ND= Not Detected thus the concentration is less then the Limit of Quantification (LOQ), *analytical instrumentation used:HS-GC-MS*



Infinite Chemical Analysis Labs
8380 Miramar Mall #102
San Diego, CA
(858) 623-2740
www.infiniteCAL.com
Lic# C8-0000019-LIC

Josh M Swider

Josh Swider
Lab Director, Managing Partner
11/15/2019

Confident Cannabis
All Rights Reserved
support@confidentcannabis.com
(866) 506-5866
www.confidentcannabis.com



This product has been tested by Infinite Chemical Analysis, LLC using valid testing methodologies and a quality system as required by state law. All LQC samples were performed and met the prescribed acceptance criteria in 16 CCR section 5730, pursuant to 16 CCR section 5726(e)(13). Values reported relate only to the product tested. Infinite Chemical Analysis, LLC makes no claims as to the efficacy, safety or other risks associated with any detected or non-detected levels of any compounds reported herein. This Certificate shall not be reproduced except in full, without the written approval of Infinite Chemical Analysis, LLC.



Certificate of Analysis

QA SAMPLE - INFORMATIONAL ONLY

2 of 3

ICAL ID: 20191114-097
Sample: 1911ICA6396.19470
190917-2 DouleuRX Cream
Strain: 190917-2 DouleuRX Cream
Category: Ingestible

NexGen Sciences
Lic. # n/a
8380 Miramar Mall
San Diego, CA 92121

Lic. #

Batch#:
Primary Size:
Total/Batch Size:
Collected: 11/15/2019; Received: 11/15/2019
Completed: 11/15/2019

Residual Solvent Analysis

Category 1	LOQ	LOD	Limit	Status	Category 2	LOQ	LOD	Limit	Status	Category 2	LOQ	LOD	Limit	Status
------------	-----	-----	-------	--------	------------	-----	-----	-------	--------	------------	-----	-----	-------	--------

NR= Not Reported thus no analysis was performed, ND= Not Detected thus the concentration is less then the Limit of Quantification (LOQ) , *analytical instrumentation used=HS-GC-MS*

Heavy Metal Screening

LOQ	LOD	Limit	Status
-----	-----	-------	--------

NR= Not Reported thus no analysis was performed, ND= Not Detected thus the concentration is less then the Limit of Quantification (LOQ) , *analytical instrumentation used:ICP-MS*

Microbiological Screening

Result	Status
--------	--------

ND=Not Detected; *analytical instrumentation used:qPCR*



Infinite Chemical Analysis Labs
8380 Miramar Mall #102
San Diego, CA
(858) 623-2740
www.infiniteCAL.com
Lic# C8-0000019-LIC

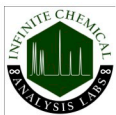
Josh M Swider

Josh Swider
Lab Director, Managing Partner
11/15/2019

Confident Cannabis
All Rights Reserved
support@confidentcannabis.com
(866) 506-5866
www.confidentcannabis.com



This product has been tested by Infinite Chemical Analysis, LLC using valid testing methodologies and a quality system as required by state law. All LQC samples were performed and met the prescribed acceptance criteria in 16 CCR section 5730, pursuant to 16 CCR section 5726(e)(13). Values reported relate only to the product tested. Infinite Chemical Analysis, LLC makes no claims as to the efficacy, safety or other risks associated with any detected or non-detected levels of any compounds reported herein. This Certificate shall not be reproduced except in full, without the written approval of Infinite Chemical Analysis, LLC.



Certificate of Analysis

QA SAMPLE - INFORMATIONAL ONLY

3 of 3

ICAL ID: 20191114-097
Sample: 1911ICA6396.19470
190917-2 DouleuRX Cream
Strain: 190917-2 DouleuRX Cream
Category: Ingestible

NexGen Sciences
Lic. # n/a
8380 Miramar Mall
San Diego, CA 92121

Lic. #

Batch#:
Primary Size:
Total/Batch Size:
Collected: 11/15/2019; Received: 11/15/2019
Completed: 11/15/2019

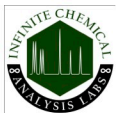
Chemical Residue Screening

Category 1	LOQ	LOD	Status	Mycotoxins	LOQ	LOD	Limit	Status
------------	-----	-----	--------	------------	-----	-----	-------	--------

Category 2	LOQ	LOD	Limit	Status	Category 2	LOQ	LOD	Limit	Status
------------	-----	-----	-------	--------	------------	-----	-----	-------	--------

Unknown Analyte(s):

NR= Not Reported thus no analysis was performed, ND= Not Detected thus the concentration is less then the Limit of Quantification (LOQ) , *analytical instrumentation used:LC-MSMS & GC-MSMS*



Infinite Chemical Analysis Labs
8380 Miramar Mall #102
San Diego, CA
(858) 623-2740
www.infiniteCAL.com
Lic# C8-0000019-LIC

Josh M Swider

Josh Swider
Lab Director, Managing Partner
11/15/2019

Confident Cannabis
All Rights Reserved
support@confidentcannabis.com
(866) 506-5866
www.confidentcannabis.com



This product has been tested by Infinite Chemical Analysis, LLC using valid testing methodologies and a quality system as required by state law. All LQC samples were performed and met the prescribed acceptance criteria in 16 CCR section 5730, pursuant to 16 CCR section 5726(e)(13). Values reported relate only to the product tested. Infinite Chemical Analysis, LLC makes no claims as to the efficacy, safety or other risks associated with any detected or non-detected levels of any compounds reported herein. This Certificate shall not be reproduced except in full, without the written approval of Infinite Chemical Analysis, LLC.